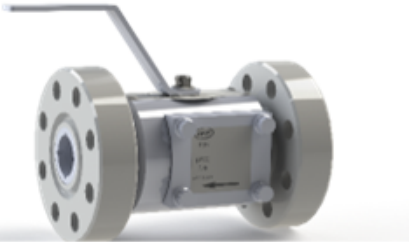




CACTUS FLOW PRODUCTS

CMI-20 Multi Orifice Inline Control Choke



The CMI-20 API 6A Control Choke is a 2" nominal multi orifice inline choke with suitability for multiple applications. The precise control has achieved wide acceptance in water and gas injection, as well as, gas lift operations for enhanced oil recovery (EOR). The trim design is ideal for CO2 applications where its' design characteristics resist the common issues with freezing.

The CMI-20 adapts well to all field applications be it manual, pneumatic, hydraulic or electric. The impinging flow characteristics make it a perfect choice for production applications such as: wellhead, manifold, separator blowdown, heater bypass and EOR operations. The API Class 5000 body can be configured to threaded, socket weld, API flanged or ANSI flanged interfaces. Available in all material classes.

FEATURES

- **Low torque quick open, quick close quarter-turn**
- **Stainless Steel, Ceramic, Tungsten Carbide Discs**
- **Multiple orifice sizes available**
- **Replaceable body wear sleeve**
- **Easy access for trim changeout while inline**
- **Near linear impinging design reduces wear**
- **Carbon steel, stainless steel, Inconel, body options**
- **Low torque easily actuated**

